

ADB-156UHD02AM1

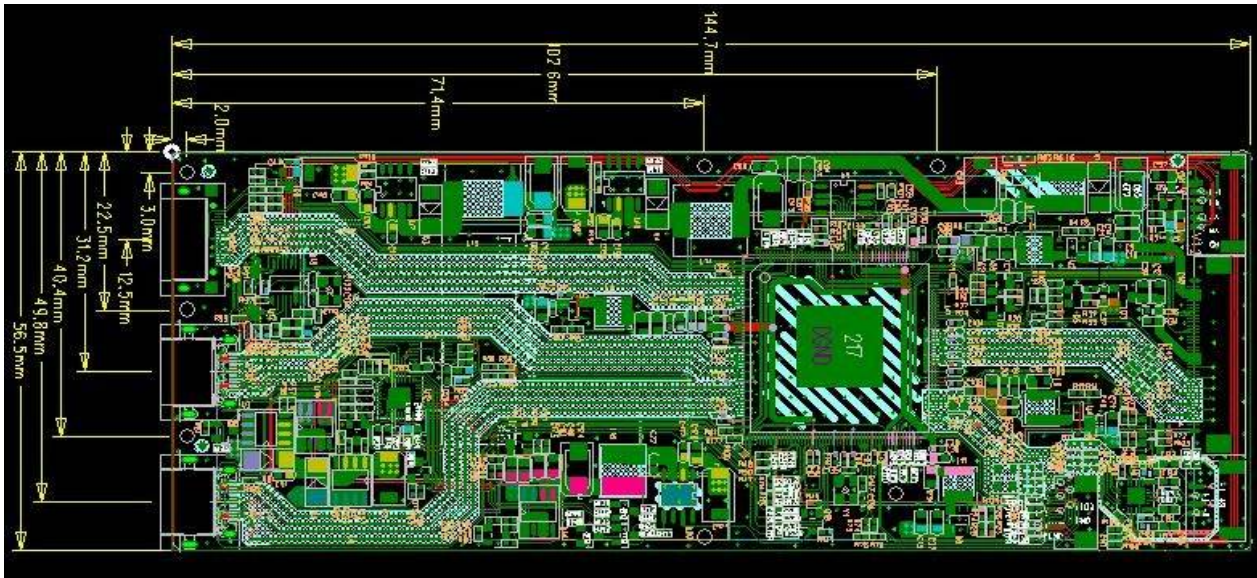
1 Product Function Description

Model	ADB-156UHD02AM1		
Chip solution	Single chip		
Interface	Input	HDMI	Support HDMI2.0 Standard
		Type-C	
	Output	eDP	Support 4Lane eDP
		Amplifier	2*2.5W
Power	Input voltage	5-20V PD Input(Supplied from Type C)	
	Stand-by power	<1W	
OSD Language	Simplified Chinese/English		
OSD Function	Brightness adjustment,Contrast adjustment,Automatic correction		

OSD BOARD



2. Production outline drawing and physical Picture (unit:mm)



NOTE:

1. PCB thickness with height of the highest part $\leq 4.0\text{mm}$
2. PCB length: 56.5mm
3. PCB width: 144.7mm
4. PCB thickness: 1.0mm
5. Screw hole: $\Phi 2.0\text{mm}$

3 Product Pin definition

