



XINSUN Display Integration Ltd.

4K BOARD FOR TFT Monitor

MODEL NO. : ADB-270UHD01AM1

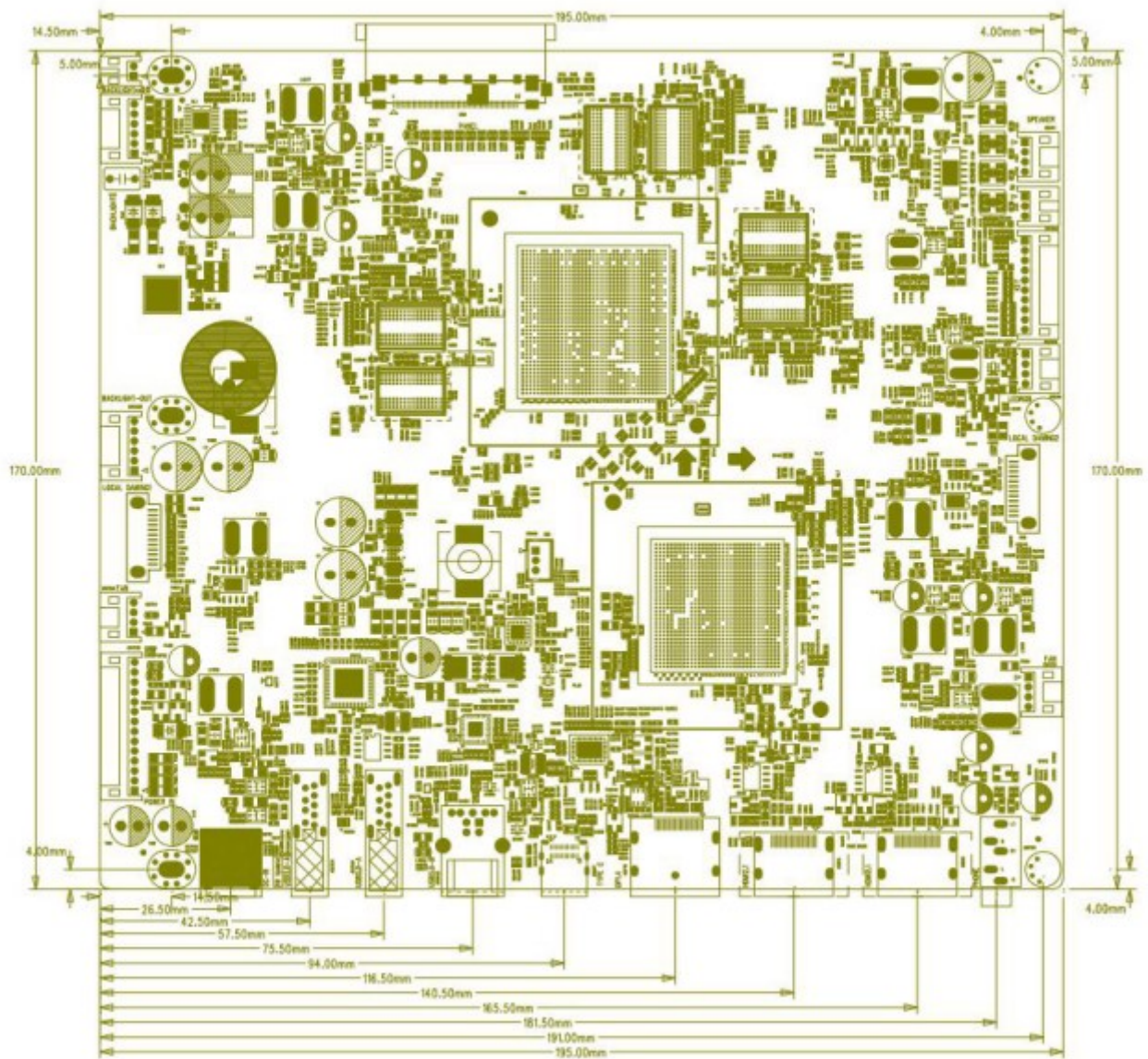


Specifications

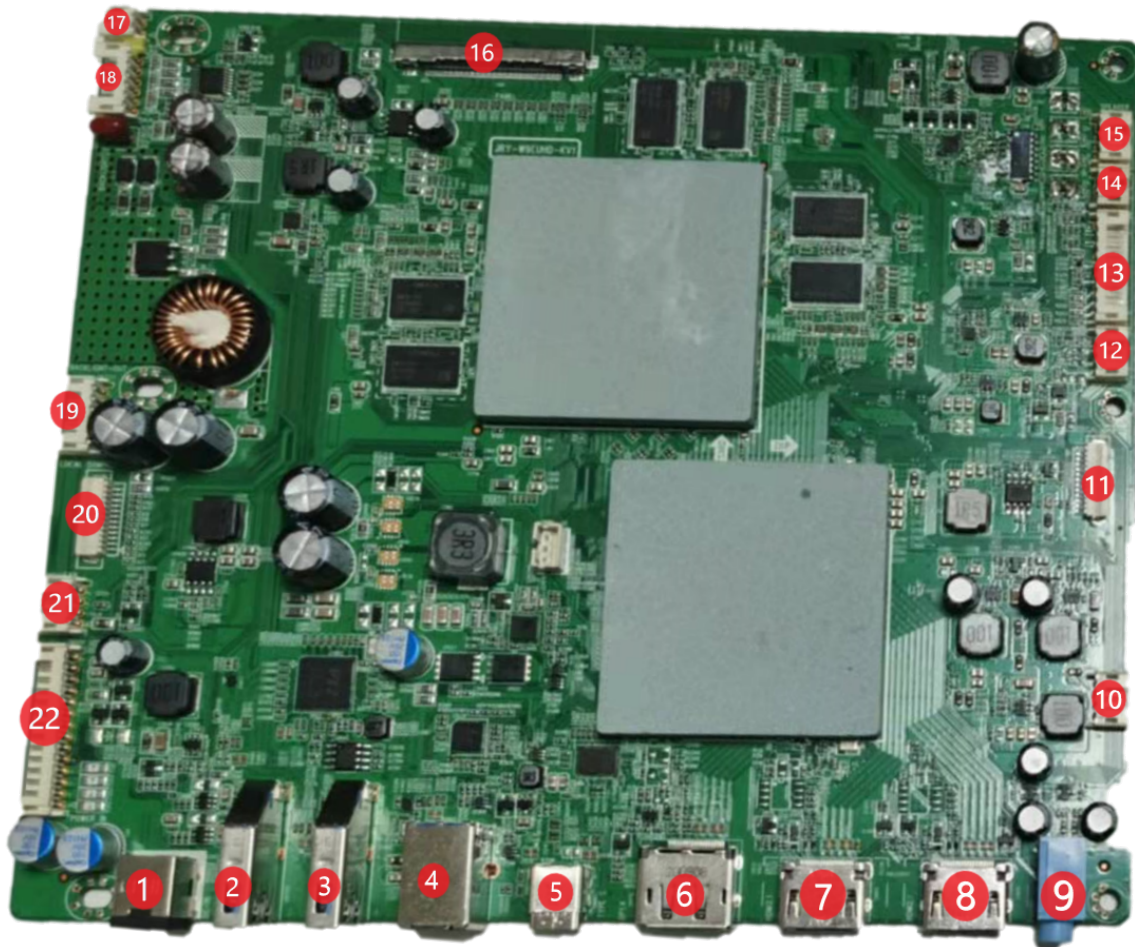
ADB-270UHD01AM1 is a multi-function LCD display driver board, which can support the highest resolution 3840*2160 144H

- *Support 8 LANE EDP (HBR2) OR 16 LANE EDP screen interface signal output.
- *Supports multiple selectable OSD languages.
- *Support motherboard software online update
- *Support DP1.4A, HDMI2.1, HDCP support 2.2 version.
- *Supports USB 3.0 function, with 2 external USB3.0A ports, which can be used for external USB device expansion.
- *Maximum support 3W*2(@8R) power amplifier output
- *Support TYPE C device signal input
- *Supports charging TYPE C devices, the maximum charging power supports PD90W output
- *Support MINI LED backlight output
- *Support built-in MPRT backlight output
- *Support external MPRT backlight output
- *Support KVM switch

Outline Dimension



Board Picture



※ Picture is for reference only, please do not use for certification purpose.

Interface Function

No.	Interface Definition	Description
1	CN7216	DC input
2	CN7215	USB3.0 A output (SW Update)
3	CN7214	USB3.0 A output
4	CN1483	USB3.0 B input
5	CN967	TYPE-C input
6	CN713	DP input
7	CN815	HDMI2.1 input
8	CN816	HDMI2.1 input (TYPE-C Update)
9	CN7211	Headphone Output
10	CN7218	Fan Output Control
11	CN6	MINI LED SPI output
12	CN939	Light effect Output
13	CN7213	Button output
14	CN7222	IR output
15	CN941	Speaker Output
16	CN9	8 LANE HBR2 eDP output
17	JL1	Backlight LED output
18	JL2	Backlight LED output
19	CN7223	External DC or PWM Backlight output
20	CN10	MINI LED SPI output
21	CN7221	Fan Interface
22	CN7212	MINI LED Backlight Output & External MPRT Backlight output