

A B C D E F G H I J K L M N

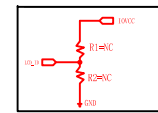
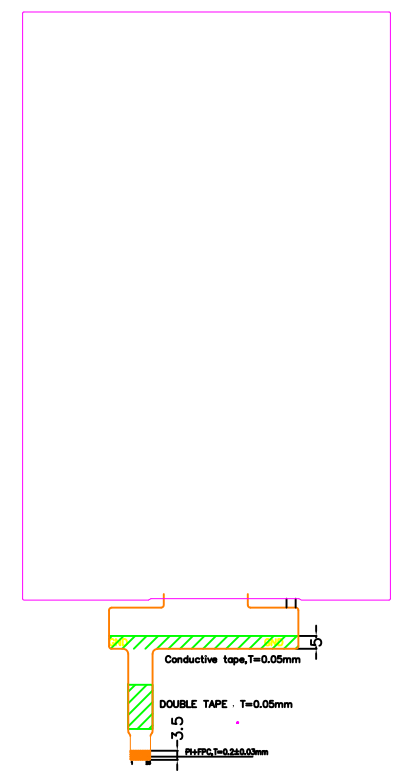
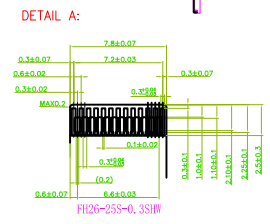
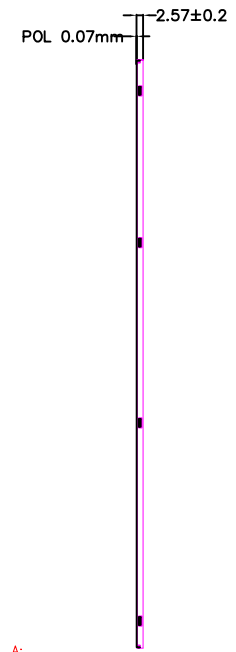
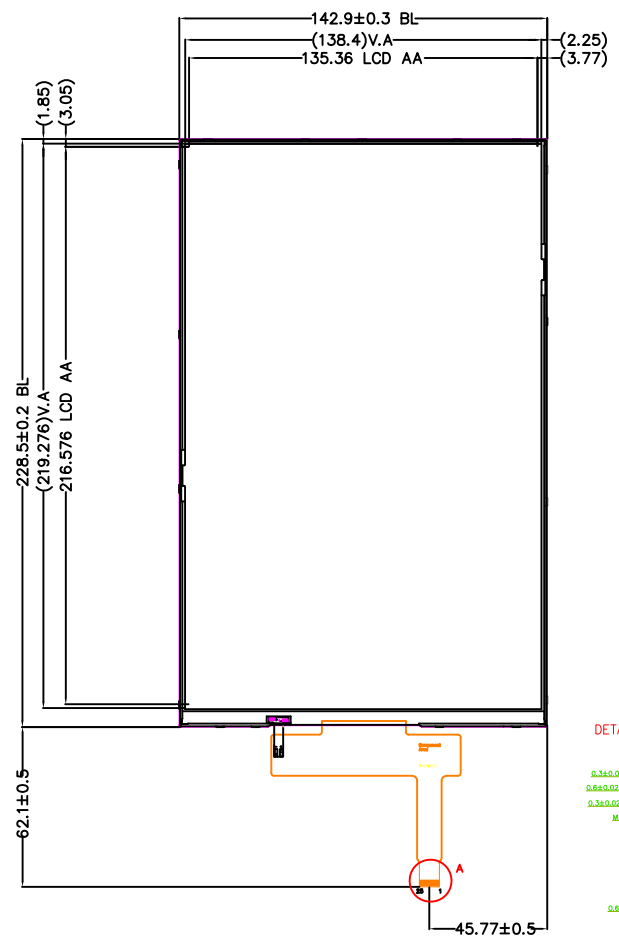
1 2 3 4 5 6 7 8 9 10 11 12 13 14

REV	DC/EC NUMBER	DESCRIPTION	DATE

TOP VIEW

SIDE VIEW

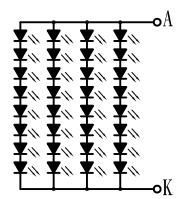
BOTTOM VIEW



PIN	SYMBOL
01	ID
02	LEDK
03	LEDA
04	GND
05	VCC2. 8V
06	IOVCC
07	LEDPWM
08	TE
09	RSTB
10	GND
11	D3P
12	D3N
13	GND
14	D2P
15	D2N
16	GND
17	CLKP
18	CLKN
19	GND
20	D1P
21	D1N
22	GND
23	D0P
24	D0N
25	GND

NOTES:

1. DISPLAY MODE : 10.1”TFT LCD, Transmissive
2. DRIVE IC : JD9365AA or equivalent
3. VIEWING DIRECTION : ALL
4. BACKLIGHT: 32 CHIP-WHITE LED/ILED=4*20mA/22.4V~26.4V
5. OPERATING TEMPERATURE: -20°C TO 70°C
STORAGE TEMPERATURE: -30°C TO 80°C
6. GENERAL TOLERANCE : ±0.20
7. Brightness: 300cd/m²



CONTROL DIMENTION:		XINSUN DISPLAY INTEGRATION			
REFERENCE DIMENTION:	()	MODEL NAME	TFT	3rd ANGLE	
APPROVED:	JOBS	PART NAME	XF101WX01AC-IMNL V00	UNIT	mm
CHECKED:	ERIC	DRAWING NUMBER		SCALE	1:1
DESIGNED:	ISSCA	MATERIAL NUMBER		PAGE	1/1

A B C D E F G H I J K L M N

14